

The Renaissance and perspective: use knowledge of tints, linear and aerial perspective to create a pastoral landscape.

Key Knowledge – The Renaissance

Learn this information

The **Renaissance** was a period of time from the 14th to the 17th century in Europe. This era bridged the time between the Middle Ages and modern times. The word "Renaissance" means "rebirth".

Coming out of the Dark

The Middle Ages began with the fall of the Roman Empire. Much of the advances in science, art, and government that had been made by the Greeks and Romans were lost during this time. Part of the Middle Ages is actually called the Dark Ages because so much of what was learned earlier was lost.

The Renaissance was a time of "coming out of the dark". It was a rebirth of education, science, art, literature, music, and a better life for people in general.

A Cultural Movement

A big part of the Renaissance was a cultural movement called **humanism**. Humanism was a philosophy that all people should strive to be educated and learned in the classical arts, literature, and science. It looked for **realism** and human emotion in art. It also said that it was okay for people to pursue comfort, riches, and beauty.

It began in Italy

The Renaissance started in Florence, Italy and spread to other city-states in Italy. Part of the reason it began in Italy was because of the history of Rome and the Roman Empire. Another reason it began in Italy was because Italy had become very wealthy and the wealthy were willing to spend their money supporting artists and geniuses.

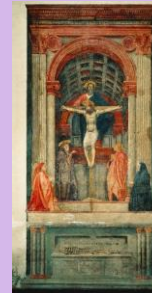
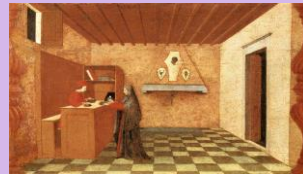
Key Skills

Practice and perform these skills

- Graduated **tints** to create **aerial** perspective.
- Use of a singular **vanishing point** to create **linear** perspective.
- Positioning trees (or other objects) thoughtfully with in the landscape to aid linear perspective.
- Use a variety of shapes and **silhouettes** to portray **horizon lines**.
- Provide examples of a **Renaissance** artwork that uses linear perspective and aerial perspective.
- Explain what you did well or less well in your final piece and how you could improve it.

Examples of linear perspective

Study and evaluate, to develop your own artwork



Examples of aerial perspective

Study and evaluate, to develop your own artwork



Key Vocabulary

Understand these keywords

Blending – gradual mixing of two colours creating a fading effect.

Tints – the adding of white to a colour.

Shades – the adding of black to a colour.

The Renaissance – a period of time from the 14th to the 17th century in Europe. The word "Renaissance" means "rebirth".

Linear perspective – a system of creating an illusion of depth on a flat surface. All parallel lines converge in a single **vanishing point** on the image's **horizon line** (see figure 1).

Vanishing point – the position at which all receding parallel lines meet (see figure 2).

Aerial perspective – a method of creating the illusion of depth by making objects get fainter the further into the background they recede.

Silhouettes – a dark shape/outline against a brighter background.

Horizon line – the point where the earth meets the sky. It is always at eye-level—no more and no less.

Realism – artworks painted in a realistic almost photographic way.

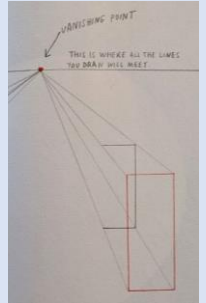


Figure 2

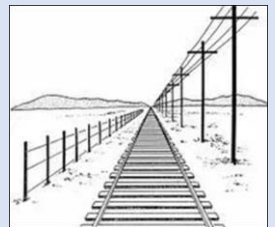


Figure 1